

# Lincoln County Produce Auction

DATE: Wednesday, April 2, 2025

	Quantity	High	Ave.	Low
Wave Petunia Hanging Baskets	29	15.00	13.34	11.00
Geranium Combo Hanging Baskets	12	13.00	13.00	13.00
Callibrachoa Hanging Basket	10	14.00	14.00	14.00
Various Annual Hanging Basket	50	16.00	13.60	11.00
Fern Hanging Basket	20	18.00	17.20	16.00
4"-6" Various Annuals	476	17.00	1.10	.50
4"-8" Geraniums	8	12.00	9.00	6.00
Flats Geraniums	15	22.00	20.66	20.00
4"-10" Gerber Daisy	190	2.25	2.21	2.00
4"-6" Perennials	84	8.00	4.09	1.50
8"-12" Perennials	4	11.00	11.00	11.00
Roses and Shrubs	60	18.00	10.65	1.50
Planters	5	9.00	9.00	9.00
Fruit trees	24	26.00	22.41	18.00
Various berries, grapes, and Rhubarb	85	12.00	7.71	5.50
Flowering and shade trees	2	25.00	25.00	25.00
Flats Various Annual Flowers	199	16.00	3.33	.50
Flats Herbs	7	17.00	16.71	16.00
Herb Planters	5	6.00	6.00	6.00
3"-10" herbs	87	1.75	.71	.50
4"-6" Cactus and Succulents	105	2.50	1.46	1.00
Flats tomato plants	292	12.00	3.68	.25
Flats Cole Crops	202	14.00	4.72	1.00
Flats Pepper plants	57	21.00	9.51	4.00
Flats onion Plants	24	8.00	7.41	7.00
Flats various vegetables Plants	11	16.00	10.45	10.00
Flats Succulents and Cactus	12	22.00	14.75	12.00
Shipped in Apples	30	10.00	7.43	4.00
dozen Farm Fresh Eggs	120	4.50	3.55	3.00

Next auction is a special Nursery

Stock sale on Wed Apr. 9th at 10.00



# FRUITS, VEGETABLES, FLOWERS AND PLANTS



If It's Fresher Than This, It's Still Growing

## Lincoln County Produce Auction, LLC

2896 KY HWY 39 N, Crab Orchard, KY 40419 PHONE # 606-355-0030

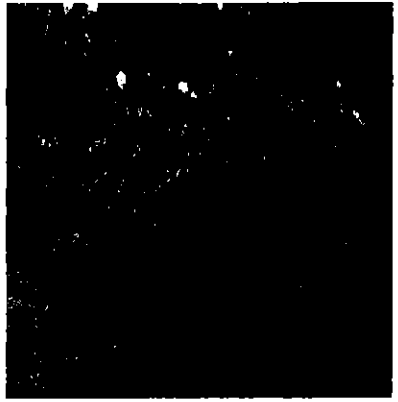
SPECIAL NURSERY STOCK SALE.....APRIL 9<sup>th</sup>, 2025....10 am

REGULAR PRODUCE FLOWER & PLANT SALE

FOLLOWING NURSERY SALE

This is our second annual Special Nursery Stock Sale.

Expect a good run of Shade, Fruit and Ornamental Trees as well as a wide variety of shrubs and bushes. Also look for a variety of berry bushes.



and brambles Our regular produce, flower and plant sale will follow the nursery stock sale.

Consignments accepted April 8<sup>th</sup> and 9<sup>th</sup> up until sale time.

### Something for Everyone!

Manager

Mervin Detweiler 269330  
(606) 355-0030

For Daily Market

Info Call

712-432-8590

Co-Manager

Lloyd C. Schrock P2606  
450 Al Wyler Road  
Crab Orchard, KY 40419